



## EXECUTIVE DUPLEX 2

LOCATED IN CUPECOY, ON THE WATERFRONT BETWEEN PORTO CUPECOY AND JORDAN VILLAGE, AQUA IS AN UNDENIABLE INVESTMENT OPPORTUNITY! THE PROJECT CONSISTS OF THE CONSTRUCTION OF A MAGNIFICENT 14-STORY BUILDING COMPLEX, WITH MANY AMENITIES, SUCH AS AN EXTRAVAGANT SWIMMING POOL, A MARINA THAT CAN ACCOMMODATE THE MOST BEAUTIFUL BOATS IN SINT MAARTEN, RESTAURANTS, SHOPS, A WATERSPORT, A POOL BAR.

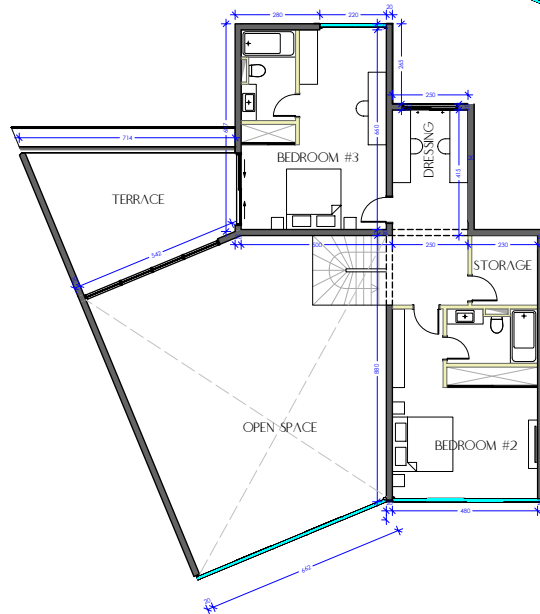
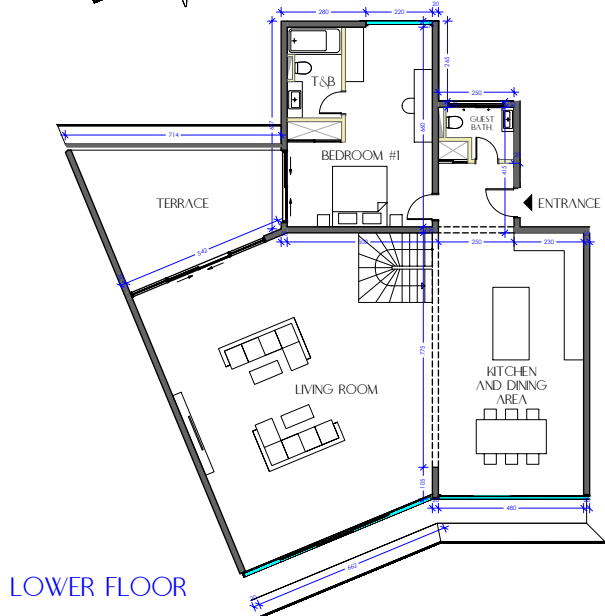
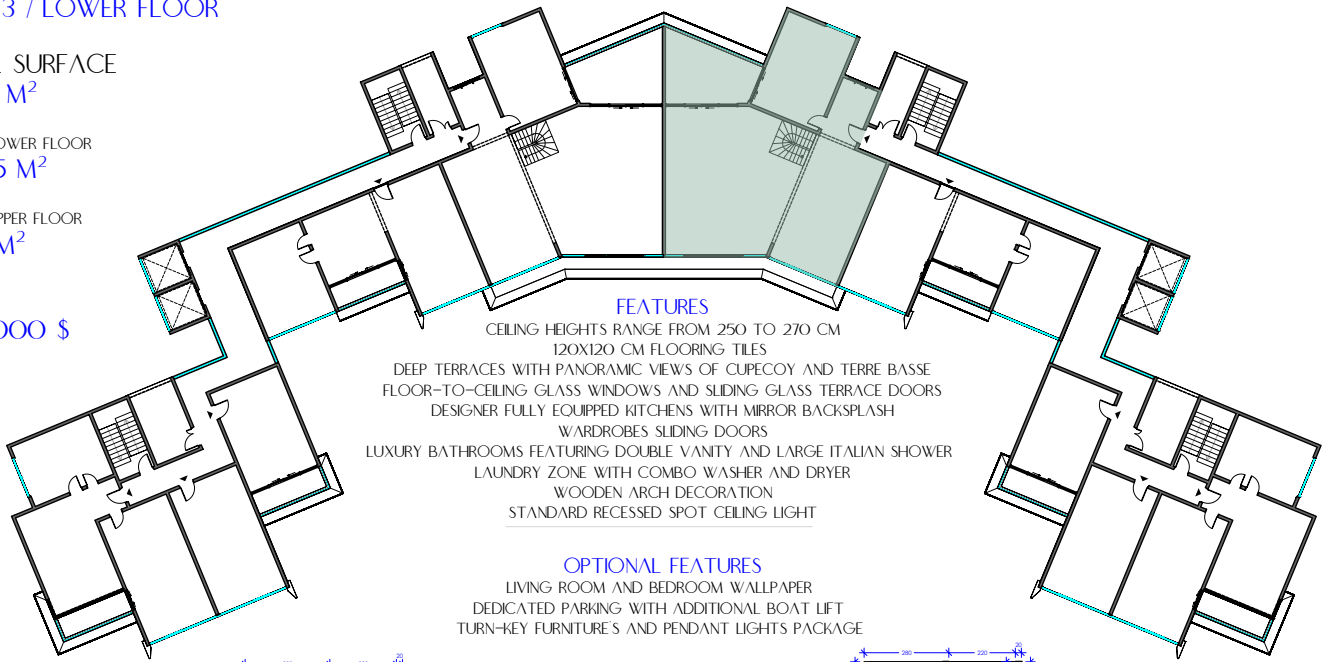
### LEVEL 13 / LOWER FLOOR

TOTAL SURFACE  
323.29 M<sup>2</sup>

SURFACE LOWER FLOOR  
202.05 M<sup>2</sup>

SURFACE UPPER FLOOR  
121.24 M<sup>2</sup>

PRICE  
2,100,000 \$





## EXECUTIVE DUPLEX 2

LOCATED IN CUPECOY, ON THE WATERFRONT BETWEEN PORTO CUPECOY AND JORDAN VILLAGE, AQUA IS AN UNDENIABLE INVESTMENT OPPORTUNITY! THE PROJECT CONSISTS OF THE CONSTRUCTION OF A MAGNIFICENT 14-STORY BUILDING COMPLEX, WITH MANY AMENITIES, SUCH AS AN EXTRAVAGANT SWIMMING POOL, A MARINA THAT CAN ACCOMMODATE THE MOST BEAUTIFUL BOATS IN SINT MAARTEN, RESTAURANTS, SHOPS, A WATERSPORT, A POOL BAR.

### LEVEL 14 / UPPER FLOOR

TOTAL SURFACE  
323.29 M<sup>2</sup>

SURFACE LOWER FLOOR  
202.05 M<sup>2</sup>

SURFACE UPPER FLOOR  
121.24 M<sup>2</sup>

PRICE  
2,100,000 \$

